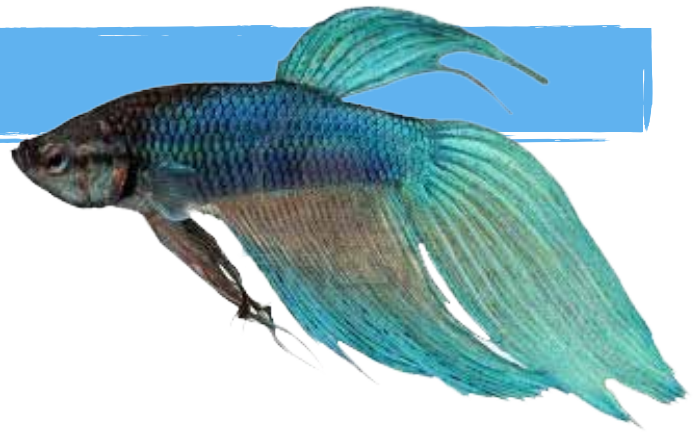


betta care sheet



aquarium

Males cannot be housed with other bettas, BUT in an adequate sized aquarium, can easily be housed with other peaceful community fish- such as neon tetras! Always use a water conditioner in tap water to make it safe for fish by removing the chemicals. Bettas should be given a minimum of 3 gallons to be kept comfortably. Longer or wider tanks suit them better than tall tanks, as bettas must have easy access to the tanks surface for air.



temperature

Water temperature should stay in the range of 76F to 80F. Bettas can acclimate to house temperatures quite well. Avoid extreme temperatures. Avoid direct sunlight. When introducing a betta to it's new home, it is best to float the betta in an unopened bag for 10 minutes.



diet

Betta food can be flaked, pellet or frozen. Feed sparingly, no more than a fish can eat within 10-20 seconds. If food is falling to the bottom of the aquarium, it is too much!

shopping list

- appropriate sized aquarium
- betta food
- water conditioner
- gravel & decorations
- net
- book about bettas

fun facts

average size

2-1/2 inches long, not including tail

average life span

up to 4 years

misc. information

Water change should be done once or twice weekly for small bowls
10-25% of the total volume of water every two weeks for larger aquariums

for more information or to see other care sheets, visit us online